



Total Solution Provider in Saw Device

SL06204AV

62.50MHz IF SAW Filter
4.40MHz Bandwidth
Revision 0 : 06. May. 2009



- Electrical Characteristics
 - Package Dimensions
 - Testing Environment
 - Frequency Characteristics
-

SAWNICS Inc.

460 Cheonheung-ri, Seonggeo-eup, Cheonan-si, Chungcheongnam-do, 330-836 / Korea.
Tel: +82 41 550 9372 / Fax: +82 41 550 9399 / www.sawnics.com

□ Electrical Characteristics

Maximum Ratings

Parameters Description	Unit	Minimum	Typical	Maximum
Operating Temperature Range	°C	-	25	-
Storage Temperature Range	°C	-40	-	85
Maximum DC Voltage	V	-	-	10
Maximum Input Power	dBm	-	-	10
Source Impedance (single ended) ⁽¹⁾	Ω	-	50	-
Load Impedance (single ended) ⁽¹⁾	Ω	-	50	-
Package type & size	V			
Length x Width	mm ²	-	13.3 x 6.5	-
Height	mm	-	-	1.8

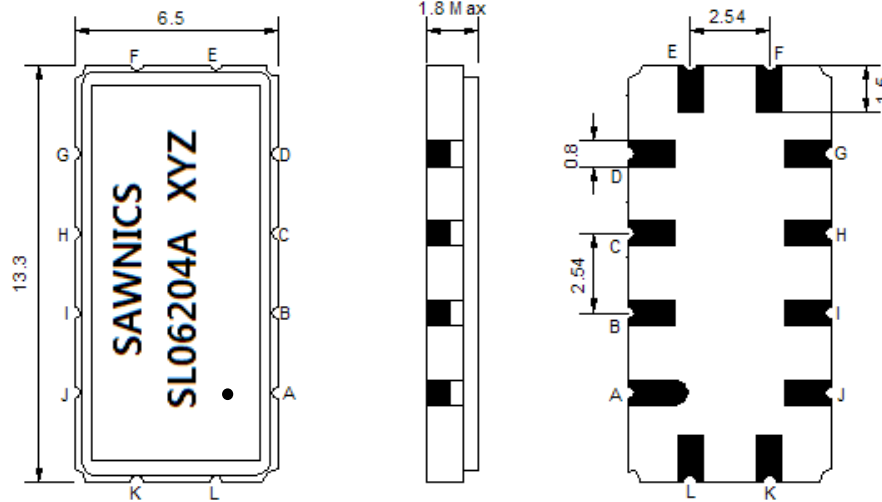
Electrical Specification

Parameters Description	Unit	Minimum	Typical	Maximum
Center Frequency (Fo)	MHz	-	62.50	-
Insertion Loss at Fo	dB	-	14.60	17.00
Group Delay Variation (Fo±1.92MHz)	nsec	-	40	70
Absolute Delay Time at Fo	usec	-	1.70	-
Temperature Coefficient	ppm/°C	-	-20	-
Amplitude Ripple (Fo±1.92MHz)	dB	-	0.35	0.80
Bandwidth at -1dB	MHz	4.20	4.40	-
Bandwidth at -3dB	MHz	4.60	4.85	-
Bandwidth at -30dB	MHz	-	6.30	6.60
Relative Attenuation				
Lower Sidelobe	dB	40	48	-
Upper Sidelobe	dB	40	45	-

Notes : (1) With Matching Network (Ref. Testing Environment Circuit as shown below).

Those impedances could be modified with different impedance values and/or structures, if necessary.

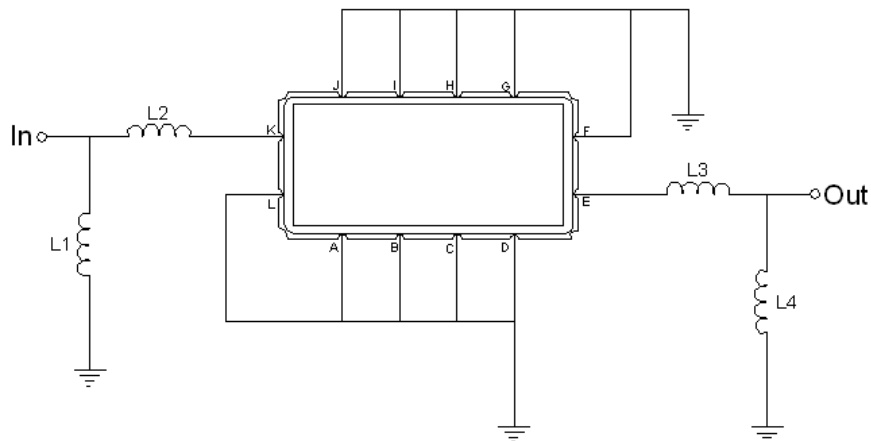
Package Dimensions



- ① SAWNICS: Brand
- ② SL06204A: Model Name
- ③ X : Date Code (Year)
- ④ Y : Date Code (Month)
- ⑤ Z : Date Code (Date)
- : Index Dot

Pin Description	
A, B, C, D, F, G, H, I, J, L	Ground
K	Input
E	Output

Testing Environment



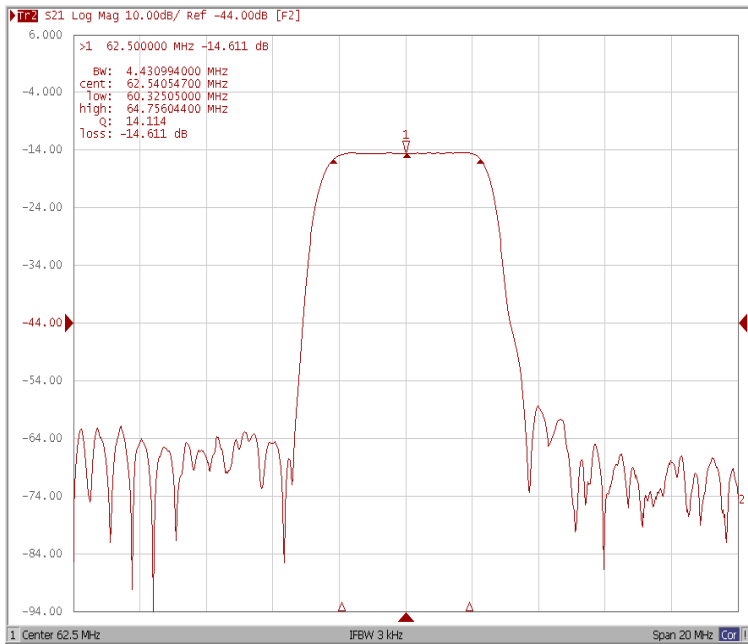
Test Fixture & Values	
Input	L1 = 56 nH, L2 = 10 nH
Output	L3 = 10 nH, L4 = 56 nH
Source/Load Impedance	50 Ω



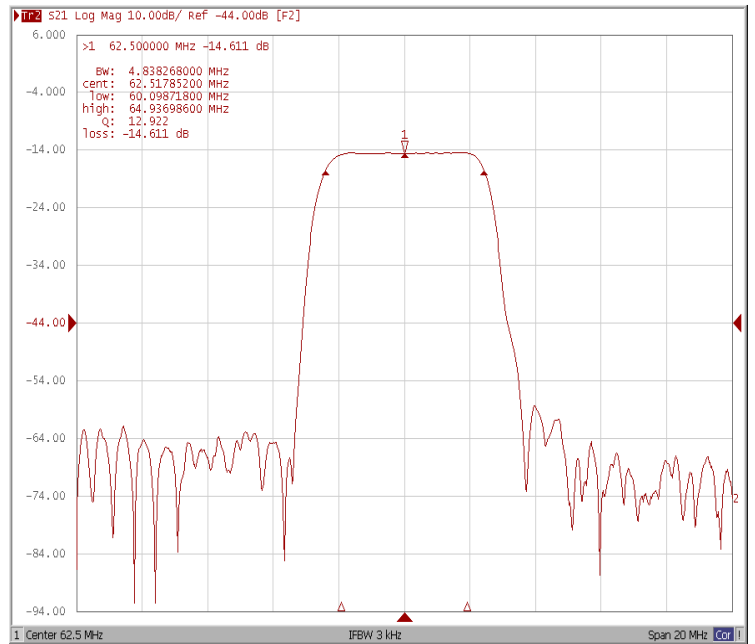
Frequency Characteristics

Frequency Response

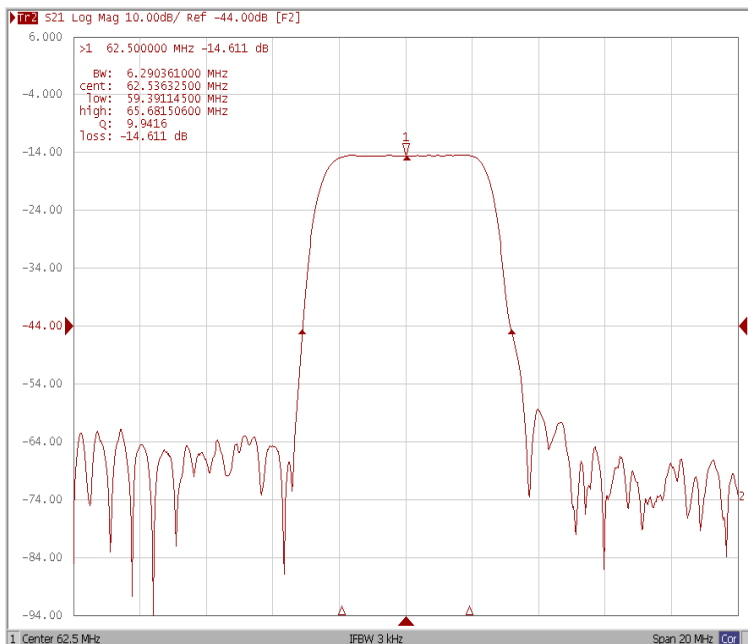
Bandwidth at -1.0 dB



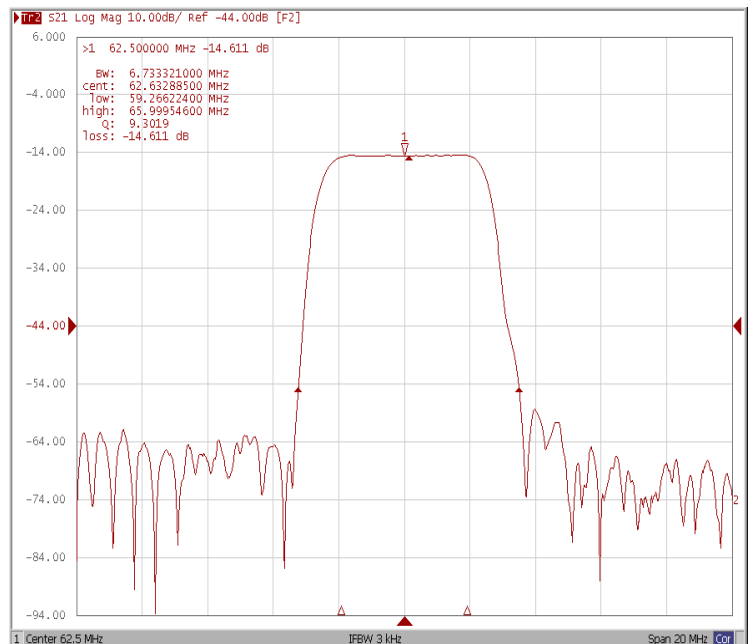
Bandwidth at -3.0 dB



Bandwidth at -30.0 dB



Bandwidth at -30.0 dB

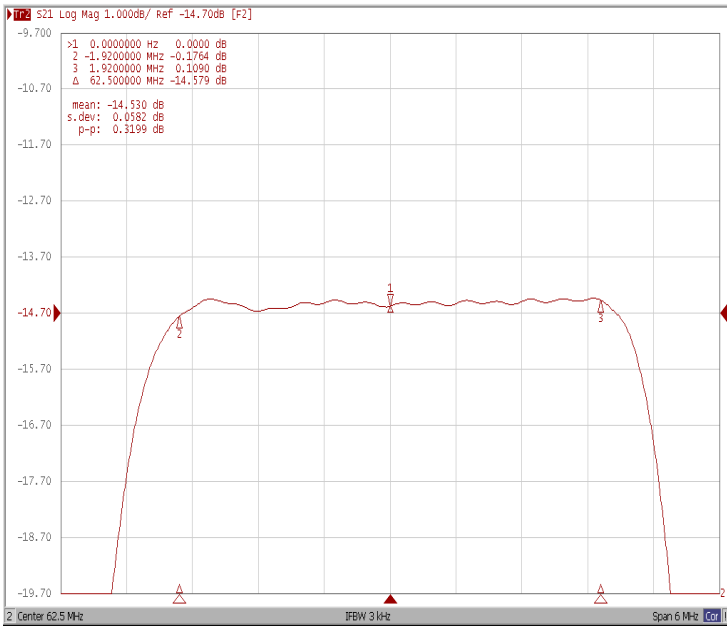




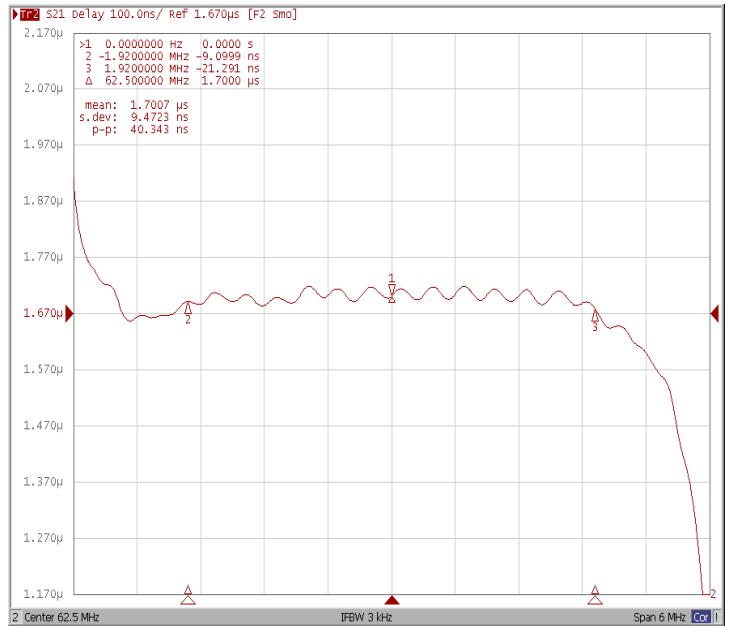
Frequency Characteristics

Frequency Response

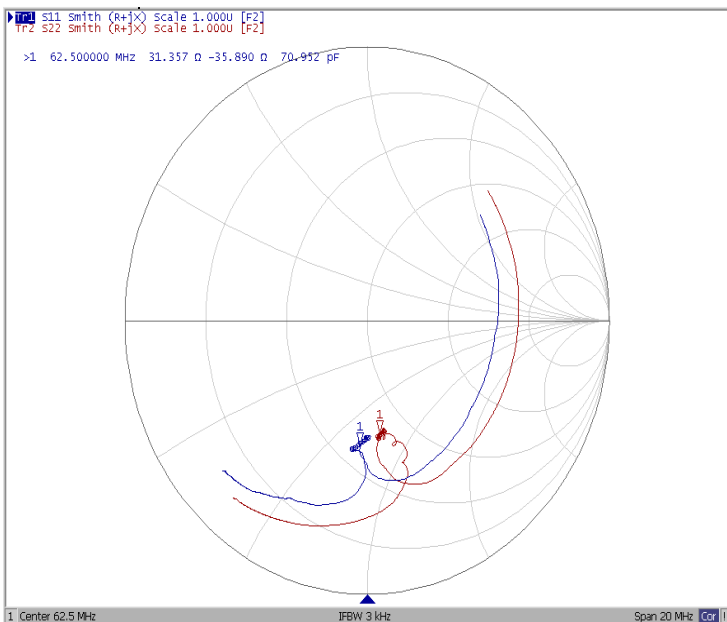
Ripple Variation($F_o \pm 1.92\text{MHz}$)



Group Delay Variation($F_o \pm 1.92\text{MHz}$)



Smith Chart



VSWR

